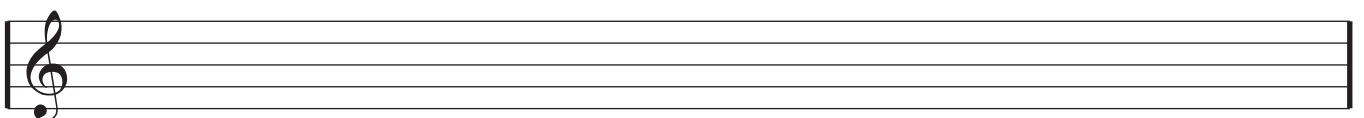
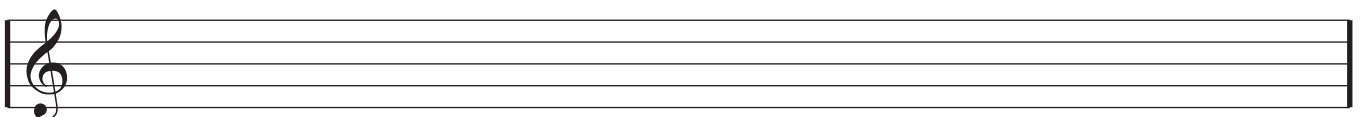
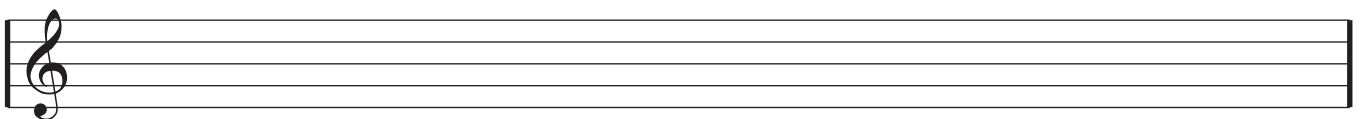
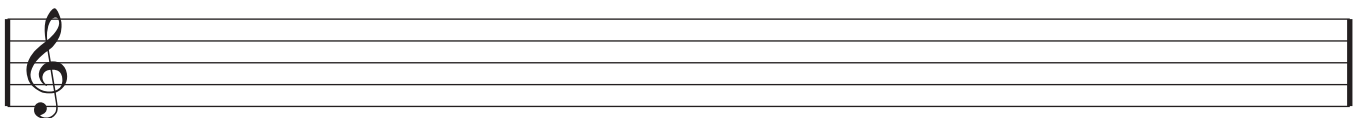
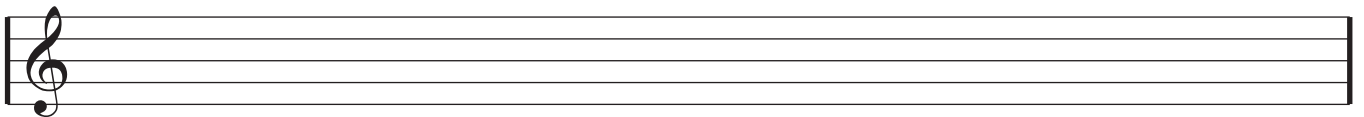
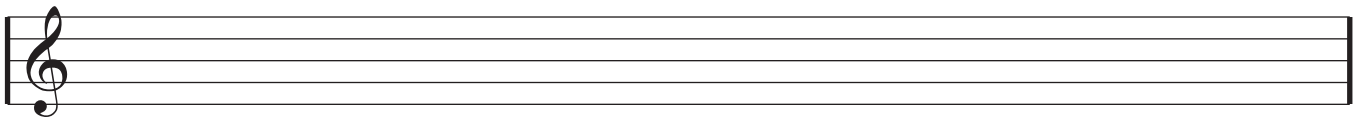
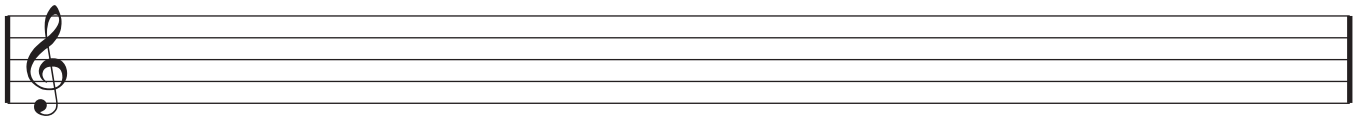
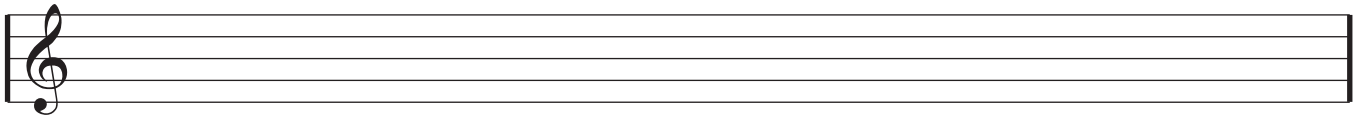
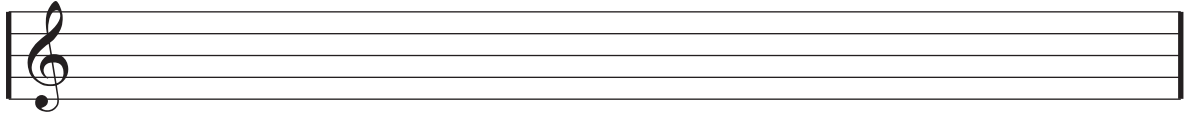


Song

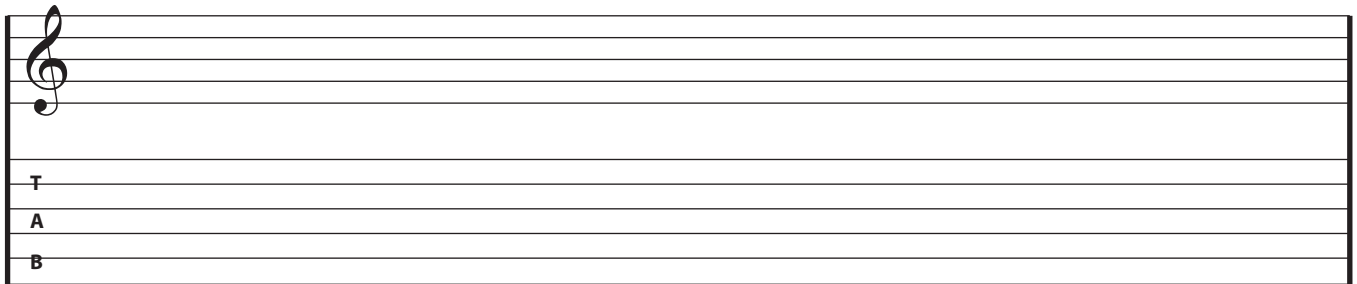
Page

/

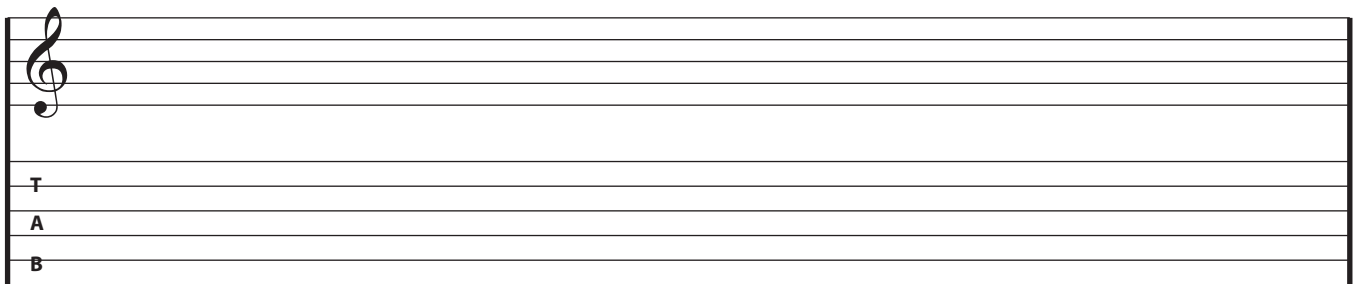


Song

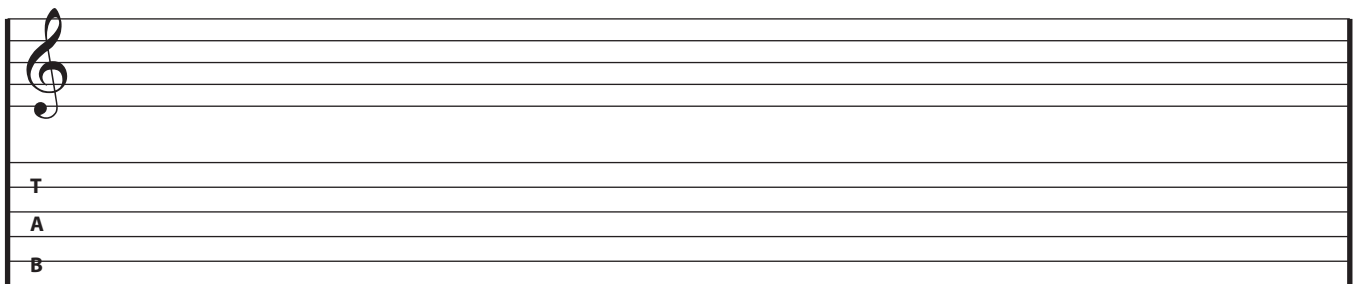
Page /



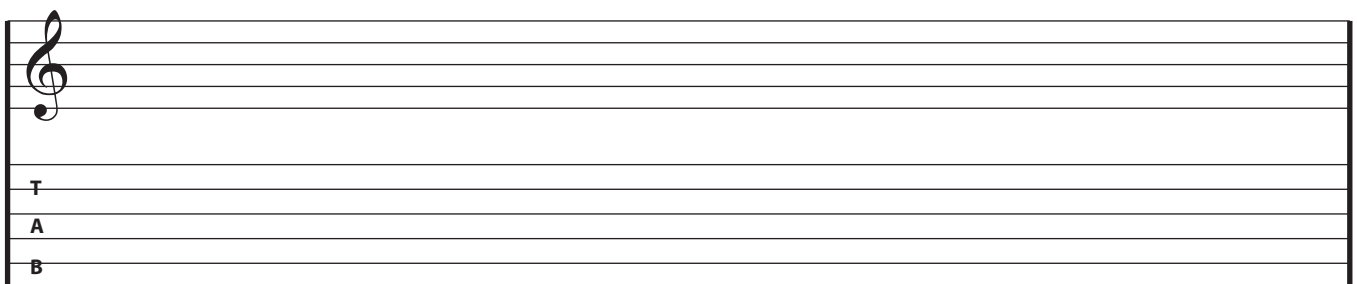
A musical staff with a treble clef. Below the staff, the letters T, A, and B are aligned with the first three lines of the staff, indicating fret positions for guitar tablature.



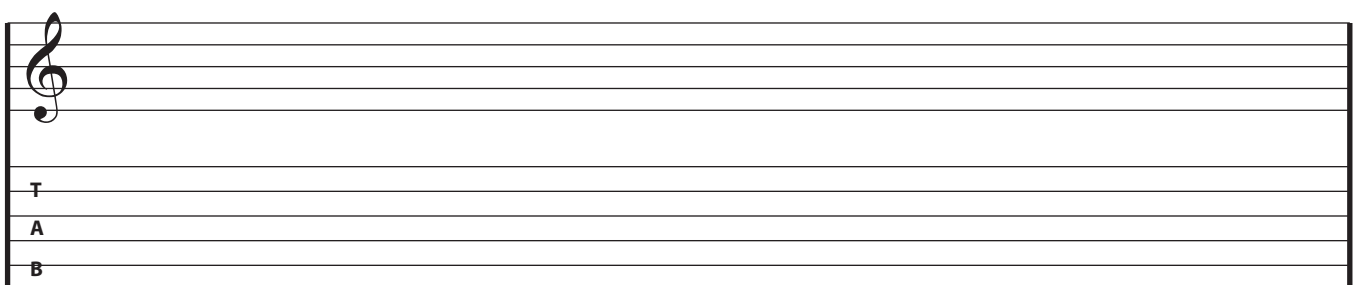
A musical staff with a treble clef. Below the staff, the letters T, A, and B are aligned with the first three lines of the staff, indicating fret positions for guitar tablature.



A musical staff with a treble clef. Below the staff, the letters T, A, and B are aligned with the first three lines of the staff, indicating fret positions for guitar tablature.



A musical staff with a treble clef. Below the staff, the letters T, A, and B are aligned with the first three lines of the staff, indicating fret positions for guitar tablature.



A musical staff with a treble clef. Below the staff, the letters T, A, and B are aligned with the first three lines of the staff, indicating fret positions for guitar tablature.

Song

Page /

T	
A	
B	

T	
A	
B	

T	
A	
B	

T	
A	
B	

T	
A	
B	

T	
A	
B	

T	
A	
B	

